



 Arcona 400



Arcona 400

Welcome to a new era where speed, ease of handling and total comfort are the key words.

We will show you the technical details and qualities of Arcona 400, but most of all we would like to show you the spirit of our boat.

A yacht where the enjoyment of sailing is paramount.

Welcome to the world of Arcona.





The best of both worlds

The Cruiser/Racer: Winning the regatta one weekend yet taking the family comfortably cruising the next. This was reflected by the jury when Arcona 400 won the **Sailboat of the Show** award at the Scandinavian Sailboat Show:

“The Arcona 400 optimizes cruising and racing and brings together the seemingly contrasting qualities of speed, function and a feeling of comfort. The harmonious design of the yacht is excellent and well balanced.”









Experience the real feeling

Harmony in every detail.

Joy in living.

Living with Arcona.





Beauty of the interior

The elegant Swedish interior design is carefully developed in every detail. In addition to the spacious bright saloon there are three two-berth cabins and a well fitted galley.

A chart table with room for any equipment you could wish for!

A heads compartment with shower and a wet locker.





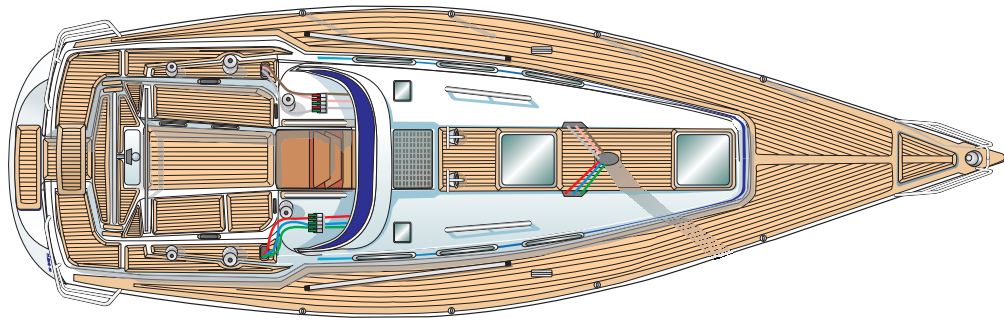
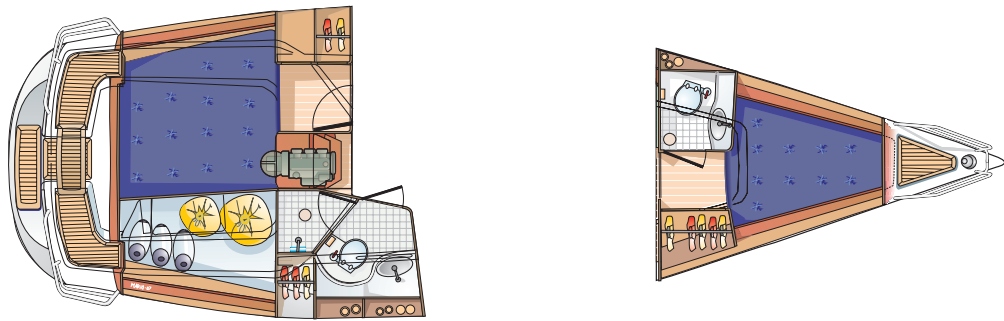
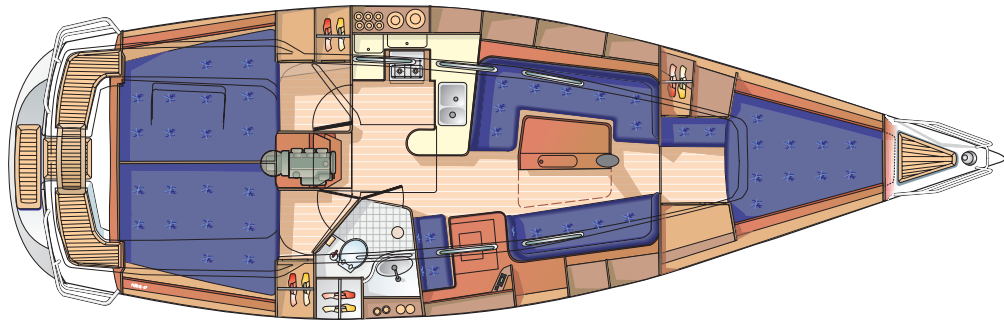


A choice of interior solutions

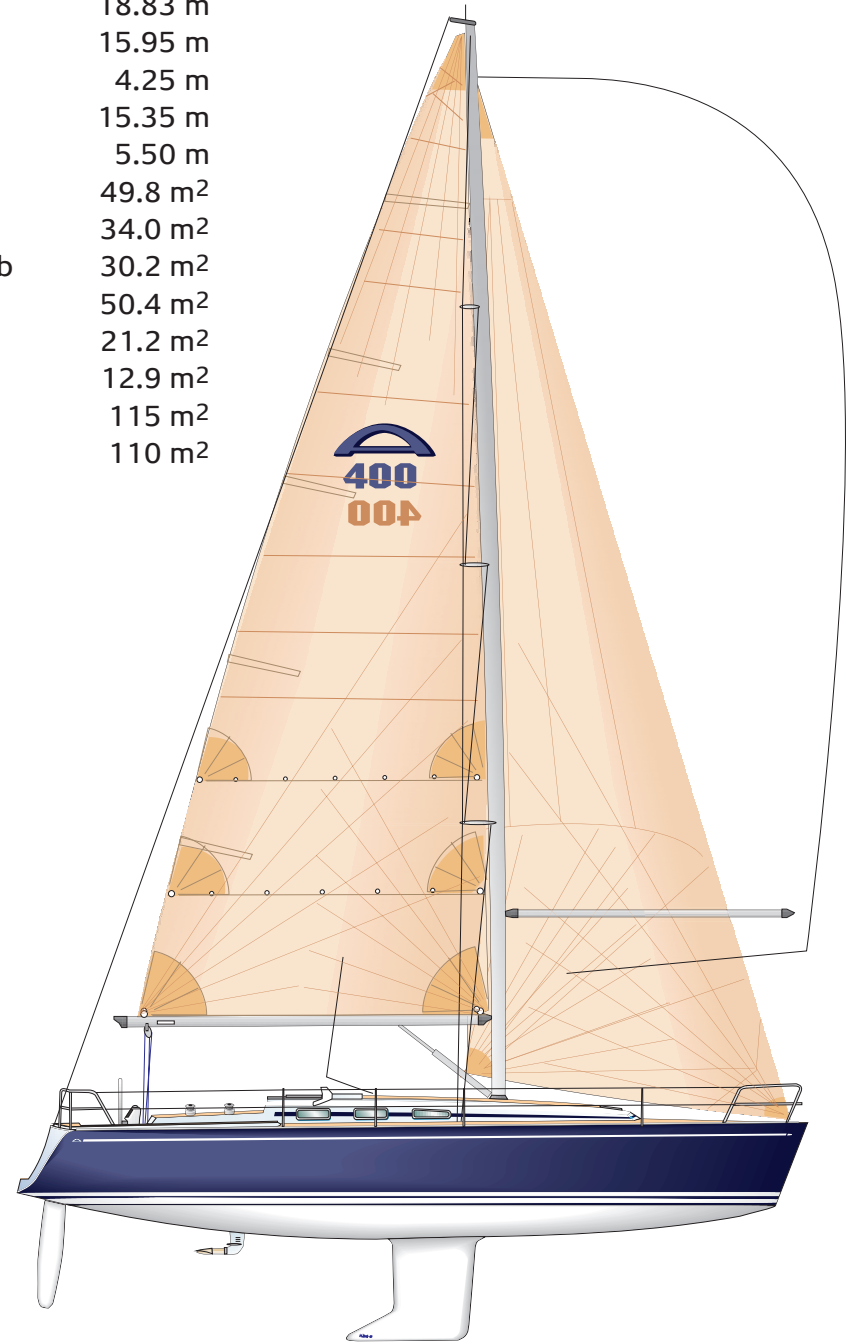
Arcona 400 can be delivered with two different interior layouts. Three cabin version with two large aft cabins, spacious double berths and a roomy forecabin. Two cabin version with one aft cabin and a separate shower compartment and a huge cockpit locker on the starboard side. To both these layouts can be added an extra toilet in the forecabin.

A refined deck layout

The clean deck layout of Arcona 400 features a hide away recess for the spray hood, halyard bins in the cockpit comings, a clever stowage solution for the washboard and of course all halyards and trim lines hidden under deck. All deck hardware is carefully selected from premium manufacturers and mounted for easy and effective handling.



Mast length	18.83 m
I	15.95 m
J	4.25 m
P	15.35 m
E	5.50 m
Main sail	49.8 m ²
Genua 3	34.0 m ²
Self tacking jib	30.2 m ²
Genua 1	50.4 m ²
Genua 4	21.2 m ²
Storm jib	12.9 m ²
Spinnaker	115 m ²
Asymmetric	110 m ²



This is the way we build our Arcona Yachts

Arcona 400 is built in accordance with the European CE-regulations and meets the high demands of the category A-Ocean. This requires that the yacht must be self-sufficient for more than 5 days and able to operate in waves up to 7 meters with winds up to Beaufort 10. But more than that every Arcona reflects our Swedish thoughtfulness and attention to detail.

Hull and deck are hand laminated in a sandwich construction using high density Divinycell as the core material. The laminate is built up of multiaxial rovings and high grade ISO-polyester. We laminate the bulkheads and the interior to the hull and deck giving the construction superb strength and rigidity. We don't trust simplifying innerliners.

The heart of the boat is a galvanised steel chassis bolted to the main bulkheads which takes all the dynamic loads from the keel and rig and distributes them to the hull. The chassis runs from forward and ends more than 2 meters behind the keel giving the construction huge structural strength.

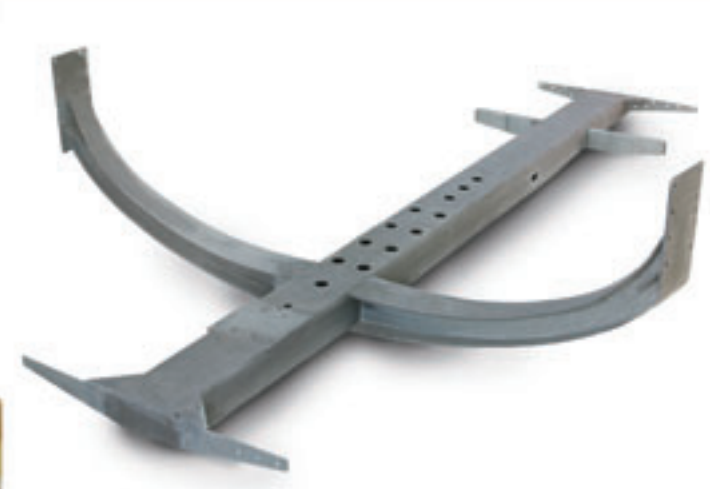
The keel-bulb is made of antimony-hardened lead, bolted to a cast steel fin giving the keel a very low centre of gravity. The fin is glassed and faired with polyester filler to a smooth finish. It is bolted through the hull to the steel chassis with 12 x 20mm stainless steel bolts.

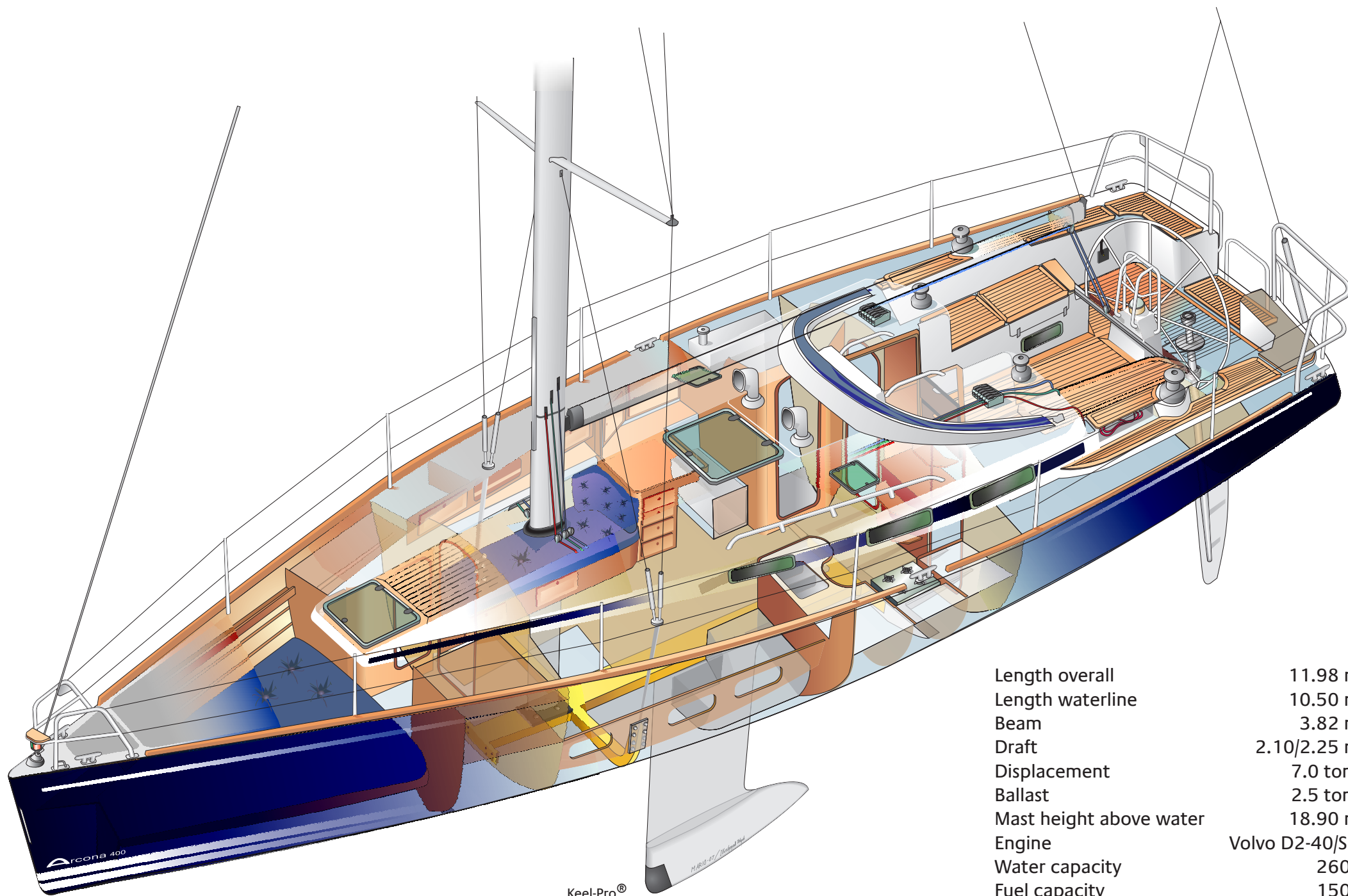
The interior, made from Khaya Mahogany, is varnished to a satin finish and can be offered in different layouts, 2 or 3 cabin version and 1 or 2 toilets.

Our yard where Arcona 400 is built is one of Europe's most modern and efficient. Each boat is built by a team of specialists. Our detailed quality control includes testing every yacht in the big indoors water pool, where sprinkler systems guarantee that every Arcona 400 is ready to meet the elements. We know that all sailors have different demands, that's why we never build boats for stock. Each boat is hand built for its owner.

Keel-Pro®

Arcona 400 is equipped with Keel-Pro, a patented method to avoid damage if running aground. The lower forward end of the lead bulb has an integrated shock absorber made from a special mix of SBR and EPDM rubber which has within it a container filled with water. If running aground the water is pressed out through holes in the sides of the shock absorber, afterwards the container will be automatically refilled. Keel-Pro thus reduce the forces considerably if running aground. That together with the strong galvanised steel chassis makes the Arcona 400 one of the safest yachts to sail.





Keel-Pro®

Length overall	11.98 m
Length waterline	10.50 m
Beam	3.82 m
Draft	2.10/2.25 m
Displacement	7.0 tons
Ballast	2.5 tons
Mast height above water	18.90 m
Engine	Volvo D2-40/SD
Water capacity	260 l
Fuel capacity	150 l
Holding tank	55 l
STIX/AVS/CE-class	37/124°/A



Arcona
yachts

*Product specifications and appearance are
subject to change without notice.
©Arcona Yachts AB, 2007*

Address/Visit
Kattholmen
S-134 40 Gustavsberg
Sweden

Web
www.arconayachts.se

E-mail
info@arconayachts.se

Phone
+46 8 570 346 77

Fax
+46 8 570 346 29